





15. India's livestock disease monitoring and forecasting system is named as.  
**TTA: 20 Seconds**  
A. Cattle Safety Laboratory  
B. Animal Safety Laboratory  
C. Biosafety Laboratory  
D. Cattle Monitoring Laboratory
16. A boat goes 20 km downstream in one hour and the same distance upstream in two hours. The speed of the boat in still water is :  
**TTA: 75 Seconds**  
A. 15 km/h                      B. 10 km/h  
C. 5 km/h                        D. 7.5 km/h
17. A shopkeeper purchased 10 boxes of pencils, containing 10 pencils, each at ₹ 100 per box and sold each pencil at a profit of 12%. What is the total sale price?  
**TTA: 80 Seconds**  
A. ₹ 1,100                        B. ₹ 1,120  
C. ₹ 1,200                        D. ₹ 1,210
18. The 'Quit India' movement was launched by Mahatma Gandhi in the year :  
**TTA: 15 Seconds**  
A. 1941                            B. 1942  
C. 1945                            D. 1946
19. Which of the following is appropriate to describe a Shooting Star?  
**TTA: 15 Seconds**  
A. Star                              B. Planet  
C. Fragments & debris    D. Asteroid
20. The O-T-C medicine Crocin is an :  
**TTA: 15 Seconds**  
A. Analgesic  
B. Antipyretic  
C. Analgesic and antipyretic  
D. Antiseptic
21. Cricket World Cup 2019 is scheduled to be hosted by.  
**TTA: 15 Seconds**  
A. England                        B. South Africa  
C. Wales                            D. England and Wales
22. If A means '+', @ means '×', & means '÷' and V means '-', then the value of  
 $7@2V 135&5@3&9 A1$   
**TTA: 45 Seconds**  
A. 14                                B. 9  
C. 6                                  D. 1
23. Select the alternative that shows a similar relationship as the given pair :  
**Minimum : Maximum**  
**TTA: 20 Seconds**  
A. Worst : Best                      B. Happy : Gay  
C. First : Second                    D. Sad : Angry
24. If the sum of digits is 9 and the difference between the digit in the ten's place and unit's place is 1, then the two-digit number is?  
**TTA: 60 Seconds**  
A. 45                                B. 63  
C. 54                                D. 72
25. Pressure is measured in terms of  
**TTA: 15 Seconds**  
A. Mass & Density                  B. Work done  
C. Force and Area                  D. Force and Distance
26. Which of the following is the least of all?  
**TTA: 35 Seconds**  
A. 0.5                                B.  $\frac{1}{0.5}$   
C.  $0.5 \times 0.5$                       D.  $0.5 \times 2$
27. Which instrument is used for viewing the sun?  
**TTA: 15 Seconds**  
A. Stroboscope                      B. Telescope  
C. Helioscope                        D. Sun meter
28. Find the least number to be added to 1739 so that it is exactly divisible by 11.  
**TTA: 40 Seconds**  
A. 11                                B. 2  
C. 1                                  D. 10  
**Direction : (29-31) P, W, Q, X, R, Y, Z, and S sit randomly in a circle facing each other. Consider the following information and answer the question based on it.**  
1. Y sits exactly between Q and R.  
2. P does not sit next to either X or Z.  
3. Z sits to the immediate right of Q.  
4. S sits third from the left of X and the right of Y.
29. Who sits to the left of S ?  
**TTA: 85 Seconds**  
A. Z                                  B. X  
C. P                                  D. Q
30. If they all were facing outside the circle, W would be to the left of :  
**TTA: 85 Seconds**  
A. X                                  B. S  
C. P                                  D. Cannot be determined
31. X sits between :  
**TTA: 85 Seconds**  
A. R and Q                            B. W and R  
C. Q and Y                            D. S and w
32. Read the following paragraph carefully and answer the question based on the information provided in it.  
Population explosion needs controlled measures to manage the earth's resources. We must find ways to utilize the natural resources in an efficient manner to satisfy the ever-growing needs of the people. Solar energy may be used to replace the increasing demand for fuels like coal, wood and so on. Rainwater harvesting is a must to meet the water needs of the urban population. If we deplete

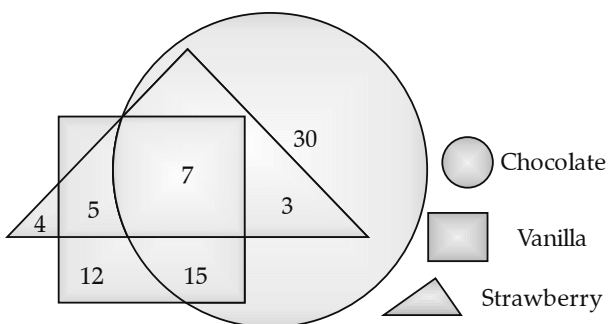
Which of the following is true according to the paragraph?

**TTA: 150 Seconds**

- A. There is another planet in the solar system like earth.
  - B. The demands of the population are unrealistic and should not be met.
  - C. Rainwater harvesting replaces the demand for coal and wood.
  - D. Measures have to be taken to wisely use the available natural resources.
33. The members of the Rajya Sabha are elected by the
- TTA: 15 Seconds**
- A. Members of legislative assemblies of states.
  - B. Members of the Lok Sabha.
  - C. People.
  - D. Members of the legislative council.

**Direction : (34-36)** Study the following diagram and answer the question based on it.

The diagram represents the favourite ice-cream flavors of kids in society.



34. How many kids like both Chocolate and Vanilla but not Strawberry?
- TTA: 25 Seconds**
- A. 5
  - B. 7
  - C. 12
  - D. 15
35. How many kids like Strawberry but not Vanilla?
- TTA: 25 Seconds**
- A. 4
  - B. 5
  - C. 7
  - D. 3
36. The ratio of kids who like Vanilla to those who like Chocolate is
- TTA: 25 Seconds**
- A.  $\frac{12}{30}$
  - B.  $\frac{39}{45}$
  - C.  $\frac{27}{45}$
  - D.  $\frac{39}{55}$

37. Which of the following is in ascending order?

**TTA: 40 Seconds**

- A.  $\frac{2}{3}, \frac{3}{4}, \frac{4}{5}, \frac{1}{2}$
  - B.  $\frac{3}{4}, \frac{4}{5}, \frac{1}{2}, \frac{2}{3}$
  - C.  $\frac{1}{2}, \frac{2}{3}, \frac{3}{4}, \frac{4}{5}$
  - D.  $\frac{4}{5}, \frac{1}{2}, \frac{2}{3}, \frac{3}{4}$
38. Oncology is associated with the treatment of
- TTA: 15 Seconds**
- A. Osteoporosis
  - B. Diabetes
  - C. Cancer
  - D. Renal failure
39.  $1.1 + 12.12 + 123.123 = ?$
- TTA: 30 Seconds**
- A. 134.343
  - B. 133.433
  - C. 132.123
  - D. 136.343

40. The origin of the tantric Yogini Cult is believed to be from

**TTA: 15 Seconds**

- A. Uttar Pradesh
  - B. Bihar
  - C. Odisha
  - D. Rajasthan
41. Looking at a portrait, Advaita said, "Anirudh is the father of my grandmother's daughter's niece. My grandfather had only two kids". How is Anirudh related to Advaita?

**TTA: 45 Seconds**

- A. Brother - Sister
  - B. Husband-Wife
  - C. Maternal Uncle - Niece
  - D. Father - Daughter
42. In a certain code, if GREAT is coded as JOEJK then ZEBRA is coded as

**TTA: 55 Seconds**

- A. BCBRA
  - B. BCBAR
  - C. CBBRA
  - D. CBBAR
43. Who advocated the introduction of western education and the English language in India?

**TTA: 15 Seconds**

- A. Bal Gangadhar Tilak
  - B. Raja Ram Mohan Roy
  - C. Dadabhai Naoroji
  - D. Gopal Krishna Gokhale
44. If the value of  $\theta = 30^\circ$ , then the value of  $\tan^2 \theta + \cot^2 \theta = ?$

**TTA: 70 Seconds**

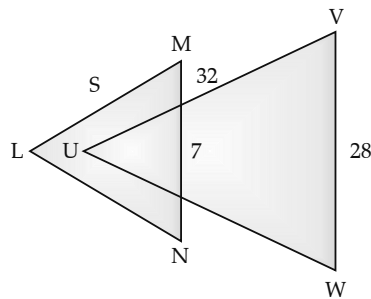
- A.  $\frac{1}{3}$
  - B.  $\frac{4}{3}$
  - C.  $\frac{9}{3}$
  - D.  $\frac{10}{3}$
45. If PRINTER is \$#@\*!&#, then INTERPRETER is
- TTA: 65 Seconds**
- A. @\*!&#&#&#!&#
  - B. @\*!&#&#&#!&#
  - C. @\*!&#&#&#!&#
  - D. @\*!&#&#&#!&#



46. Shimla Agreement 1972 was signed by  
**TTA: 15 Seconds**  
 A. Foreign Ministers of India & Pakistan  
 B. Indira Gandhi & Z.A. Bhutto  
 C. Indira Gandhi & Benazir Bhutto  
 D. A. B. Vajpayee & Pervez Musharraf
47. A polygon has 9 sides. What is its interior angle?  
**TTA: 65 Seconds**  
 A. 140  
 B. 100  
 C. 120  
 D. 400
48.  $125 - 73 + 48 - 137 + 99 = ?$   
**TTA: 45 Seconds**  
 A. 237  
 B. 62  
 C. -37  
 D. 52
49. Rearrange the jumbled letters to make a meaningful word and then select the one which is different.  
**TTA: 45 Seconds**  
 A. DRE  
 B. LUBE  
 C. GROANE  
 D. KNIP
50. An assertion (A) and a reason (R) are given below.  
**Assertion (A)** : Agricultural activities are less in mountainous regions.  
**Reason (R)** : Mountains have less fertile terrain and difficult weather conditions.  
 Choose the correct option.  
**TTA: 70 Seconds**  
 A. Both A and R are true and R is the correct explanation of A  
 B. Both A and R are true, but R is not the correct explanation of A  
 C. A is true, but R is false  
 D. A is false, but R is true
51. Statements followed by some conclusions are given below.  
**Statements :**  
 1. Some football players are cricketers.  
 2. All hockey players love football though some are cricketers.  
**Conclusions :**  
 I. Some hockey players who are cricketers play football too.  
 II. There is at the most one cricketer who plays football and hockey.  
 Find which of the given conclusion(s) logically follow(s) from the given statements.  
**TTA: 70 Seconds**  
 A. Only conclusion I follows.  
 B. Only conclusion II follows.  
 C. Both I and II follow.  
 D. Neither I nor II follows.
52. Rupee 5 and 10 coins are now made of  
**TTA: 15 Seconds**  
 A. Ferritic stainless steel  
 B. Silver and steel

- C. Cupro nickel alloy  
 D. Copper and brass

53. If LMN and UVW are similar triangles, the value of sides is



**TTA: 55 Seconds**

- A. 4  
 B. 6  
 C. 8  
 D. 9

54. Statements followed by some conclusions are given below.

**Statements :**

- A. Some electricians are plumbers.  
 B. All plumbers are mechanics.

**Conclusions :**

- I. Some mechanics are electricians or plumbers.  
 II. Not all electricians are mechanics.

Find which of the given conclusion(s) logically follow(s) from the given statements.

**TTA: 65 Seconds**

- A. Only conclusion I follows.  
 B. Only conclusion II follows.  
 C. Both I and II follow.  
 D. Neither I nor II follows.

55. A man introduces a lady as the daughter of the father of his uncle. His uncle has only one sibling. The lady is the man's \_\_\_\_\_

**TTA: 25 Seconds**

- A. Mother  
 B. Paternal Aunt  
 C. Sister  
 D. Daughter

56. Find the Greatest Common Factor of 280 and 144.

**TTA: 40 Seconds**

- A. 2  
 B. 8  
 C. 6  
 D. 4

57. 10 dozen apples, 15 dozen mangoes, and 20 dozen oranges are kept for sale.  $\frac{1}{2}$ ,  $\frac{1}{3}$ rd and  $\frac{1}{4}$ th of each item respectively have been added. What is the total number of fruits kept for sale now?

**TTA: 80 Seconds**

- A. 720  
 B. 600  
 C. 580  
 D. 820

58. Car B is running twice as fast as car A. If car A covers a distance of 90 km in  $1\frac{1}{2}$  hrs, what is the speed of car B?

**TTA: 85 Seconds**

- A. 60 km/h  
 B. 90 km/h  
 C. 100 km/h  
 D. 120 km/h

59. Which signs should be interchanged if the equation below needs to be true?

$$1.5 + 8 \times 9 - 16 \div 2 = 4$$

TTA: 35 Seconds

- A.  $\times$  and  $-$                       B.  $\div$  and  $-$   
 C.  $+$  and  $\div$                       D.  $-$  and  $+$
60. National Space Society gave the 2015 Space Pioneer Award to

TTA: 15 Seconds

- A. Mylswamy Annadurai, Head of Mars orbiter program team  
 B. ISRO's Mars Orbiter program team  
 C. Mangalyaan  
 D. K. Radhakrishnan

61. Read the information carefully and select the correct option.

**Offer A :** Buy one item for ₹ 1,599/-and get one free.

**Offer B :** Buy one item for ₹ 999/- and get another at 50% discount.

TTA: 55 Seconds

- A. A is cheaper and B is costlier  
 B. A is costlier, and B is cheaper  
 C. Cost is the same in both cases  
 D. A and B are not comparable
62. A and B can do a piece of work in 72 days. B and C can do it in 120 days. C and A can do it in 90 days. In how many days all three together can do the work?

TTA: 80 Seconds

- A. 80 days                      B. 100 days  
 C. 60 days                      D. 150 days
63. If  $TREK = 8346$  and  $FAMILY = 209175$ , then  $REALITY = ?$

TTA: 55 Seconds

- A. 3427185                      B. 3407185  
 C. 3409175                      D. 3490185
64. Find the similarity in the following:  
 Plays, Movies, Documentary, Roadshows

TTA: 25 Seconds

- A. All can be used to convey social messages.  
 B. All are showcased in theatres.  
 C. All of them are only in the English language.  
 D. No similarity

65. Indian armed forces conducted "Operation Meghdoot" at

TTA: 15 Seconds

- A. Kargil                      B. Srinagar  
 C. Siachen                      D. Amritsar

66. If  $\cos \theta = \frac{4}{5}$ , then  $(\sec \theta + \operatorname{cosec} \theta) =$

TTA: 65 Seconds

- A.  $\frac{7}{5}$                       B.  $\frac{15}{12}$   
 C.  $\frac{35}{12}$                       D.  $\frac{12}{5}$

67. If  $3A = 2B = C$ , then  $A : B : C = ?$

TTA: 70 Seconds

- A. 6 : 2 : 3                      B.  $\frac{1}{3} : \frac{1}{2} : 1$   
 C. 3 : 2 : 1                      D. 1 : 3 : 2

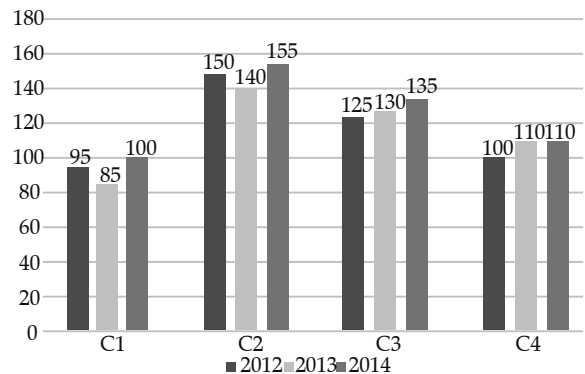
68. Champions of the 2nd football Indian Super League (ISL) were

TTA: 15 Seconds

- A. FC Goa                      B. Chennaiyin FC.  
 C. Delhi Dynamos                      D. Atletico de Kolkata

**Direction : (69-71)** The bar chart represents sales of four companies C1, C2, C3, and C4 (in millions) for the years 2012, 2013, and 2014.

Consider the bar chart and answer the question based on it.



69. The ratio of combined sales of C1 and C4 in the year 2013 to that of the year 2012 is :

TTA: 55 Seconds

- A. 1                      B.  $\frac{1}{2}$   
 C.  $\frac{3}{2}$                       D.  $\frac{2}{3}$

70. Which two companies showed an increase in their sales from 2012 to 2013?

TTA: 55 Seconds

- A. C1 and C4                      B. C2 and C3  
 C. C3 and C4                      D. C1 and C3

71. The combined sales of C2 in 2012 and 2014 is how much more than that of C3 for the same years?

TTA: 15 Seconds

- A. 12%                      B. 13.72%  
 C. 14.75%                      D. 17.30%

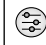






# SMART ANSWERSHEET


**Correct %** Indicates % of students answered correctly.

**Skipped %** Indicates % of students skipped questions.

 Easy  Medium  Difficult

Q. A.	Correct	Skipped	Q. A.	Correct	Skipped	Q. A.	Correct	Skipped	Q. A.	Correct	Skipped	Q. A.	Correct	Skipped	Q. A.	Correct	Skipped
1.A	6%	82%	16.A	42%	24%	31.B	61%	24%	46.B	6%	91%	61.B	0%	100%	76.B	48%	36%
2.C	3%	85%	17.B	24%	30%	32.D	76%	15%	47.A	0%	94%	62.C	0%	91%	77.B	52%	33%
3.C	0%	91%	18.B	64%	24%	33.A	64%	36%	48.B	6%	88%	63.B	0%	100%	78.B	39%	42%
4.B	18%	58%	19.C	55%	33%	34.D	52%	30%	49.C	0%	97%	64.A	12%	88%	79.B	21%	70%
5.C	18%	64%	20.C	36%	52%	35.C	67%	33%	50.C	3%	85%	65.C	3%	97%	80.A	42%	52%
6.C	3%	88%	21.D	27%	21%	36.D	45%	42%	51.C	3%	88%	66.C	67%	18%	81.B	39%	15%
7.A	73%	6%	22.C	48%	18%	37.C	27%	52%	52.C	12%	85%	67.B	24%	24%	82.C	76%	18%
8.C	27%	18%	23.A	21%	27%	38.C	55%	15%	53.C	18%	82%	68.B	21%	39%	83.C	55%	18%
9.D	39%	6%	24.C	9%	36%	39.D	70%	21%	54.C	36%	55%	69.A	21%	45%	84.C	79%	15%
10.A	42%	21%	25.C	33%	33%	40.C	67%	24%	55.C	3%	94%	70.C	64%	33%	85.C	82%	15%
11.C	18%	24%	26.C	18%	42%	41.D	52%	27%	56.B	12%	76%	71.D	18%	79%	86.B	21%	64%
12.C	55%	9%	27.C	6%	52%	42.D	67%	33%	57.A	18%	79%	72.B	6%	79%	87.C	27%	70%
13.A	33%	6%	28.D	15%	55%	43.B	21%	80%	58.D	6%	91%	73.B	0%	79%	88.B	21%	70%
14.D	73%	6%	29.A	12%	70%	44.D	9%	82%	59.B	6%	88%	74.C	0%	85%	89.C	24%	70%
15.C	70%	15%	30.C	9%	61%	45.C	6%	88%	60.B	0%	94%	75.C	3%	85%	90.C	24%	70%

PERFORMANCE ANALYSIS	
OVERALL	
Avg. Score	58/100
Toppers Score	96/100
Cut Off	85/100
Your Score	_____



## OSWAAL LEARNING TOOLS

**For Solutions of the above Paper, follow the link**

Visit : <https://qrgo.page.link/dCoJt>
Or Scan the Code
